



WYNDHAM[®]
JOMTIEN PATTAYA



WYNDHAM[®]

JOMTIEN PATTAYA

PROJECT OVERVIEW

Project name	Wyndham Jomtien Pattaya
Developer	Siam Inter World Asset Co.,Ltd.
Project Location	555-555/1 Moo.1, Na Jomtien, Sattahip Chon Buri 20250
Land Title Deeds	Title deed 28099 , 28100 555-555/1 Moo.1, Na Jomtien, Sattahip, Chon Buri
Project area	13-3-55 Rai
Ownership type	Freehold
Construction starts	Q2 2020
Expected completion	Q3 2023
No. of Blocks/ Storeys	4 Residential Buildings / 7 Storeys plus Basement 1 Exclusive Lobby Building / 3 Storeys plus Basement
Number of Units	630 Residential units / 55 Commercial units
Unit Types	Studio types (Usable area appx. 24.45 - 34.90 sq.m.) One Bedroom types (Usable area appx. 49.40 - 50.00 sq.m.) Two Bedroom types (Usable area appx. 76.45 sq.m.)

No. of Elevators / Escalators	14 elevators / 2 escalators
No. of Stairways	4 Main stairways 10 Fire stairways
No. of Car parks	213 Lots
Facilities	Exclusive Lobby Outdoor recreation area with landscape Garden Ballroom Meeting Room Restaurants Swimming Pool Pool Bar Sauna Jacuzzi Shallow Pool Kids Pool Fitness Kids Club Game Room Spa
Sanitary system	Underground water tank Roof tank
Security system	24-hour security CCTV system in common area Key card access control Security gate
Fire protection escape system	Fire hose cabinet on each floor Fire alarm
Ventilation system	Ventilation fan in all bathrooms in residential units
Lighting protection system	Faraday cage system

“ DISCOVER HAPPINESS
THE BEST OF AESTHETICS ”



*Pictures shown are early architect renderings and are subject to change.

PROJECT INSPIRATION

Wyndham Jomtien Pattaya by Siam Inter World Asset Co., Ltd. The biggest tourism industry leader with more than 20 years experience in hotel and resort management in Thailand

Siam Inter World Asset Co., Ltd. aware how importance to develop this big growing tourism business. That's the beginning of Wyndham Jomtien Pattaya, a 5 star luxury condominium resort style under the management of the world-class hotel brand Wyndham Hotel Resort

Wyndham Jomtien Pattaya เกิดขึ้นมาจากความร่วมมือของบริษัท Siam Inter World Asset Co., Ltd. ผู้ดำเนินธุรกิจอุตสาหกรรมการท่องเที่ยวระดับแถวหน้าของประเทศไทย ที่มีประสบการณ์มายาวนานในธุรกิจท่องเที่ยว และการบริหารจัดการโรงแรม รีสอร์ท เพื่อรองรับอุตสาหกรรมท่องเที่ยวและส่งเสริมการท่องเที่ยวมายาวนานกว่า 20 ปี ทั้งในประเทศไทยและต่างประเทศ

Siam Inter World Asset Co., Ltd. เล็งเห็นถึงความสำคัญของการพัฒนาและส่งเสริมศักยภาพให้กับอุตสาหกรรมท่องเที่ยวของประเทศไทย ที่มีแนวโน้มที่จะเติบโตได้มากขึ้น เพื่อให้สามารถรองรับและสอดคล้องกับการเติบโตในธุรกิจท่องเที่ยวอย่างก้าวกระโดด จึงเกิดมาเป็น โครงการ Wyndham Jomtien Pattaya ขึ้นมา โครงการคอนโดมิเนียมสุดหรูสไตล์รีสอร์ทระดับ 5 ดาว ภายใต้การบริหารงานของแบรนด์โรงแรมระดับโลก Wyndham Hotel Resort



HAM
PATTAYA



*Pictures shown are early architect renderings and are subject to change.



*Pictures shown are early architect renderings and are subject to change.

INVESTMENT PROGRAM

- The project developments are truly for investment. All the master plan, facilities, and room layouts are designed to serve various forms of rental services and to operate as a 5-star hotel

The rental guaranteed program return at rate of 6% for 8 years

- The property are managed by international branded hotel operators with consistent reputation in high quality services and professional rental management

- The Owner will have the right to utilize their property for a complimentary **“FREE STAY”** for 15 day’s



GUARANTEED RETURN
6% FOR 8 YEARS*



RETURN DURING
CONSTRUCTION



FREE STAY PER
YEAR FOR OWNER



HOTEL OPERATED BY
WYNDHAM GROUP





FACILITIES

Landscape Garden
Communal Swimming Pool
Pool bar
Sundeck & Sunbed
Kids Playground
Fitness
Sauna
Jacuzzi
Relaxation Spa
Drop off
Exclusive Lobby
Escalator
24 Hours Reception
Ball Room
Meeting Room
Game Room
Kids Club
Restaurants
Parking Lots
Elevator
Fire Alarm System





© Pictures shown are early architect renderings and are subject to change.



*Pictures shown are early architect renderings and are subject to change.











*Pictures shown are early architect renderings and are subject to change.







*Pictures shown are early architect renderings and are subject to change.



MASTER PLAN



1. Fountain
2. Drop Area
3. Exclusive Lobby
4. Sauna
5. Spa
6. Meeting Room
7. Ball Room
8. Restaurants 1
9. Restaurants 2
10. Swimming Pool
11. Pool Bar
12. Jacuzzi
13. Kids Club
14. Game Room
15. Fitness
16. Parking
17. Landscape Garden

ROOM TYPE

STUDIO TYPE

24.45 - 34.90 SQ.M.



SMALL ROOM TWIN
24.45 SQ.M.



STUDIO KING
34.90 SQ.M.



STUDIO TWIN
34.90 SQ.M.



*Pictures shown are early architect renderings and are subject to change.

INTERIOR PERSPECTIVE
STUDIO TYPE

1 BEDROOM TYPE

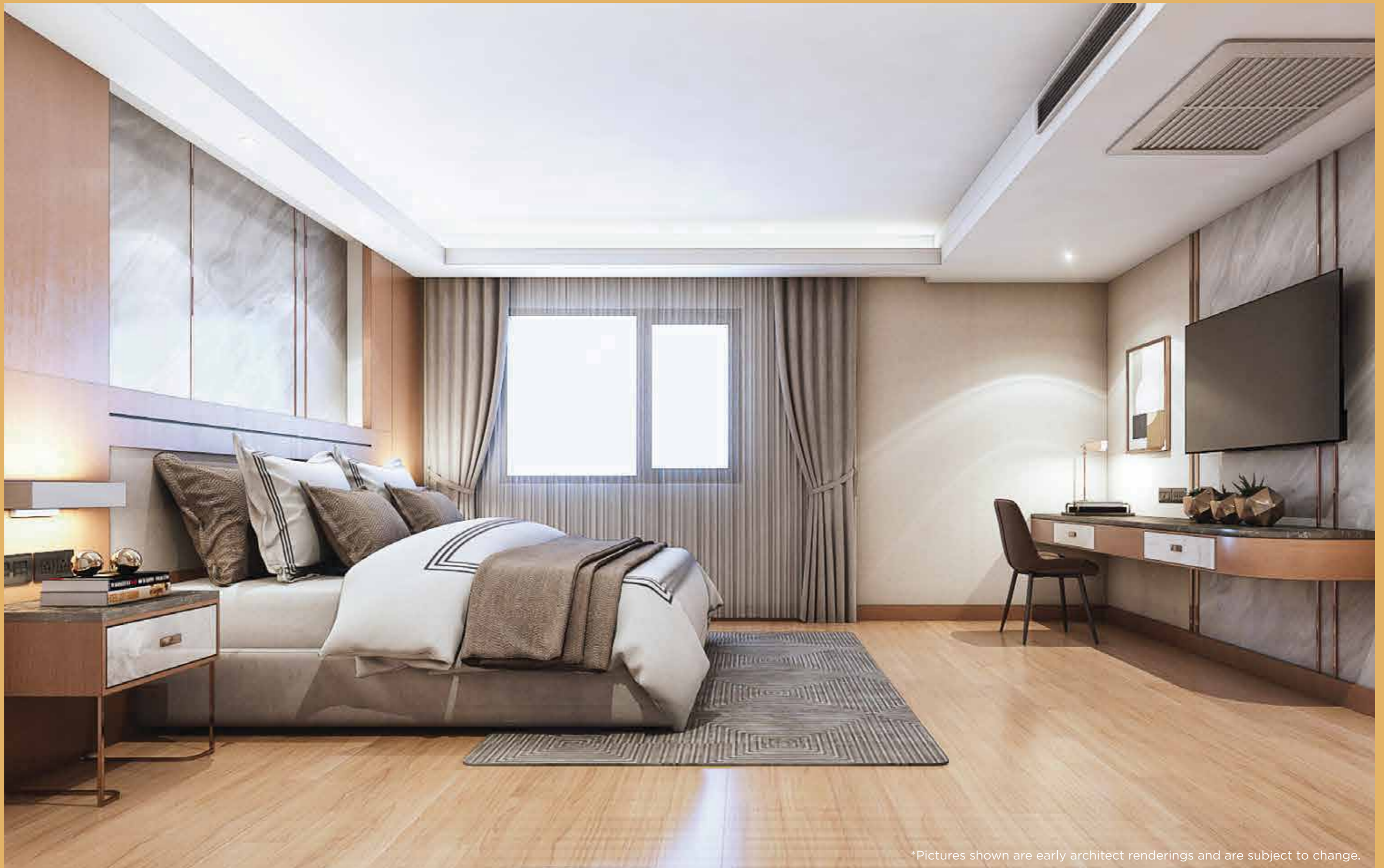
50.00 SQ.M.





*Pictures shown are early architect renderings and are subject to change.

INTERIOR PERSPECTIVE
1 BEDROOM TYPE

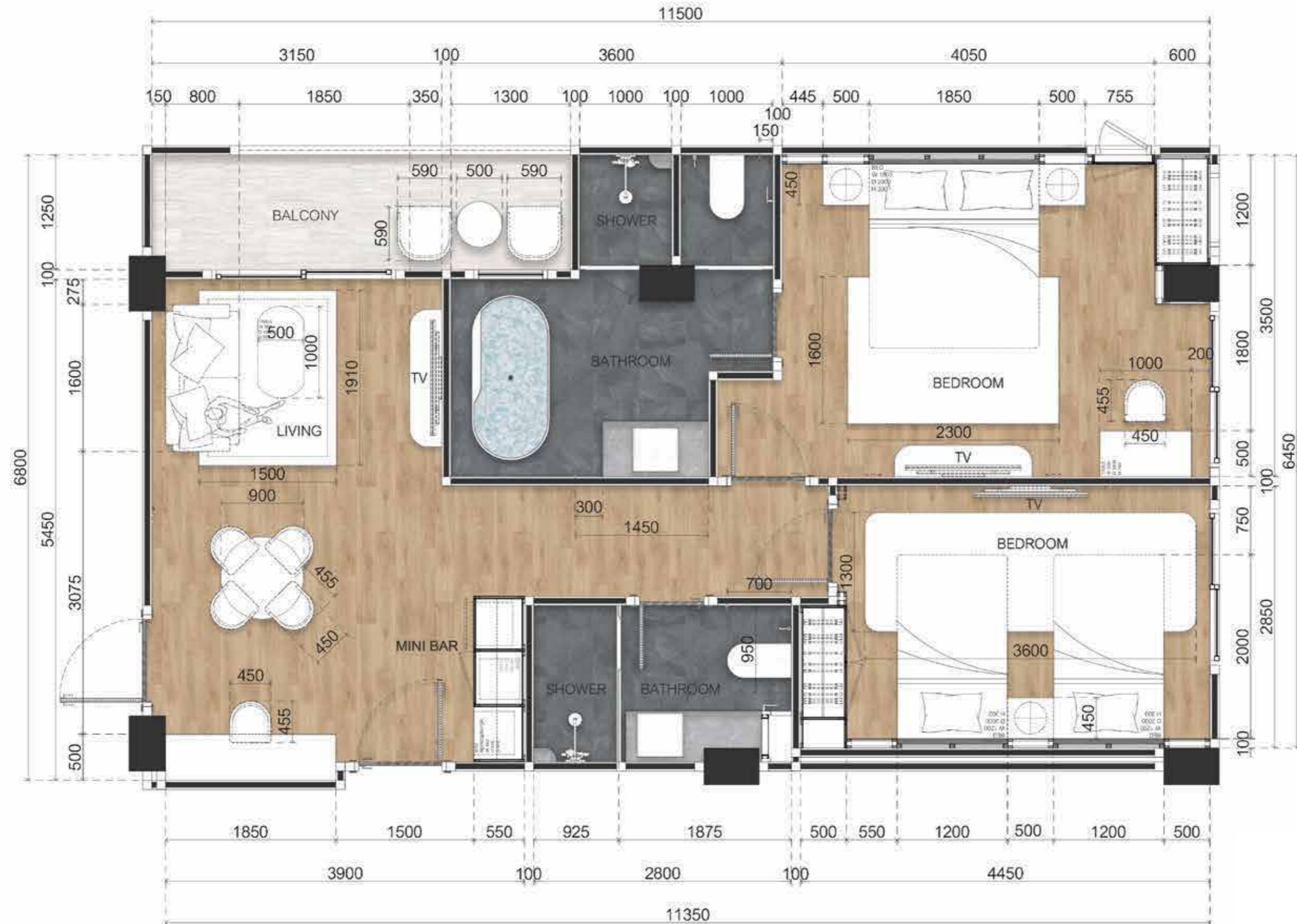


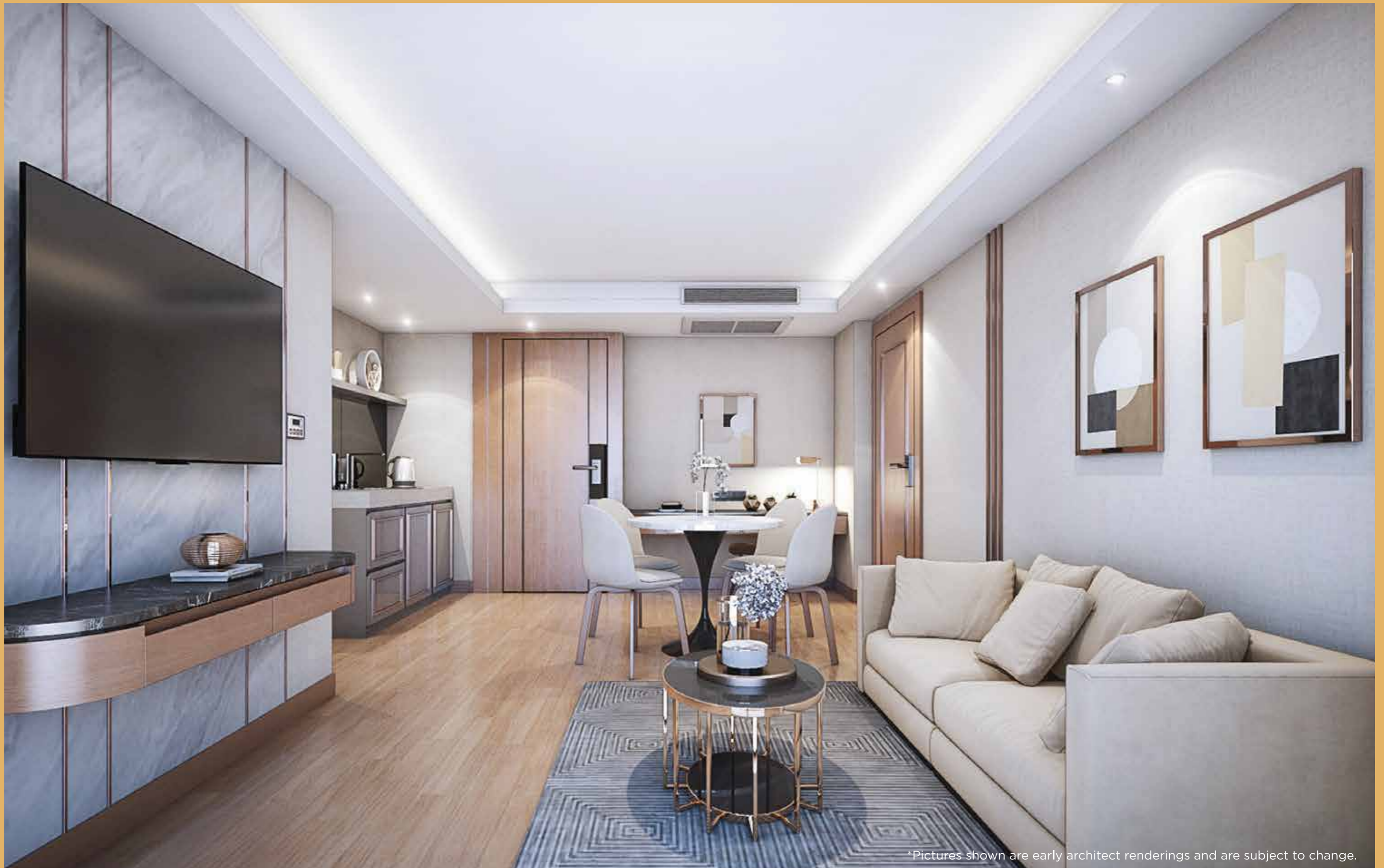
*Pictures shown are early architect renderings and are subject to change.

INTERIOR PERSPECTIVE
1 BEDROOM TYPE

2 BEDROOM TYPE

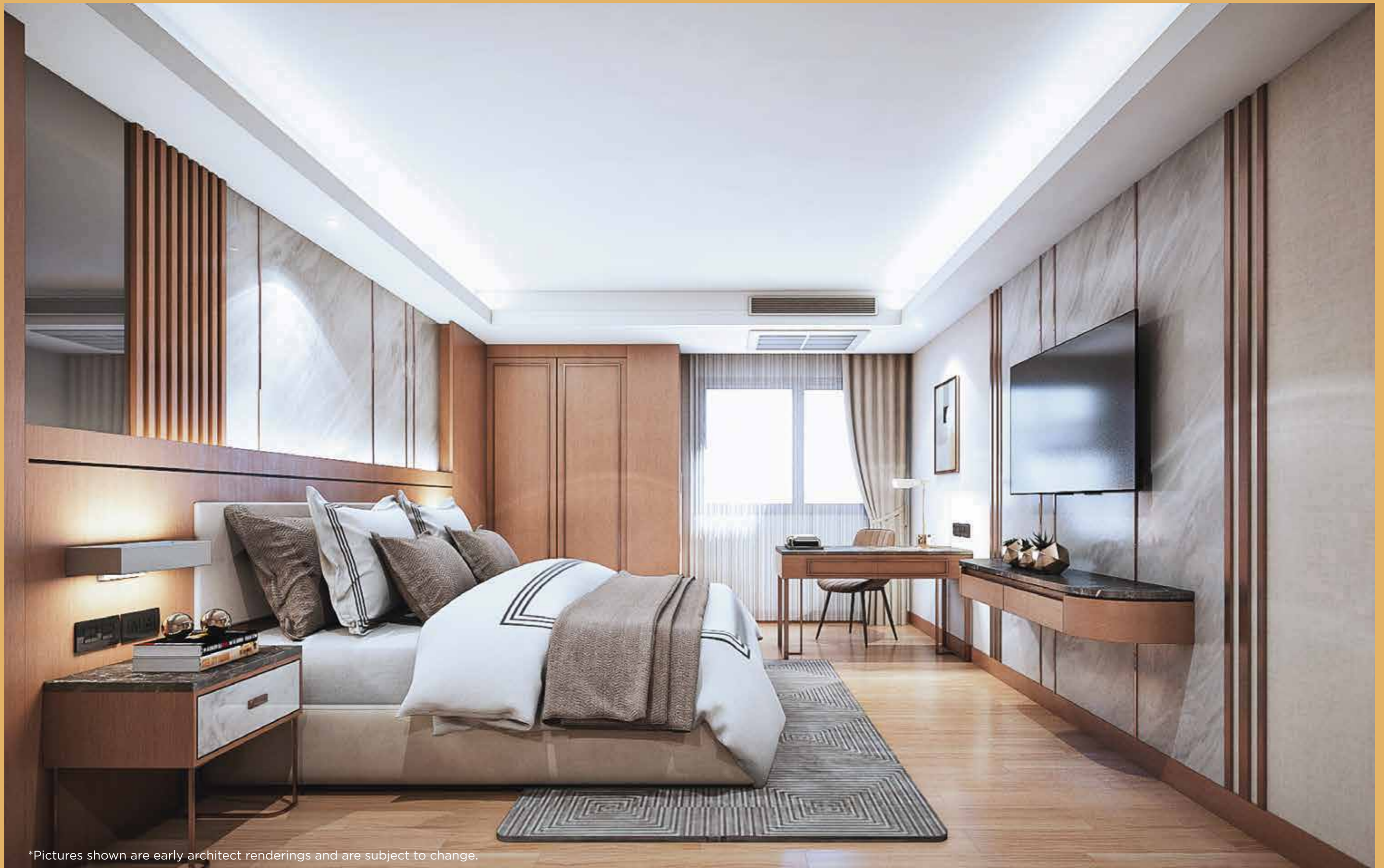
76.45 SQ.M.





*Pictures shown are early architect renderings and are subject to change.

INTERIOR PERSPECTIVE
2 BEDROOM TYPE



*Pictures shown are early architect renderings and are subject to change.

INTERIOR PERSPECTIVE
2 BEDROOM TYPE



*Pictures shown are early architect renderings and are subject to change.

INTERIOR PERSPECTIVE
2 BEDROOM TYPE

FLOOR PLAN

BUILDING 1

2nd Floor





BUILDING 1

3rd Floor



BUILDING 1

4th Floor





BUILDING 1

5th Floor



BUILDING 1

6th Floor





BUILDING 1

7th Floor



BUILDING 2

2nd Floor





BUILDING 2

3rd Floor



BUILDING 2

4th Floor





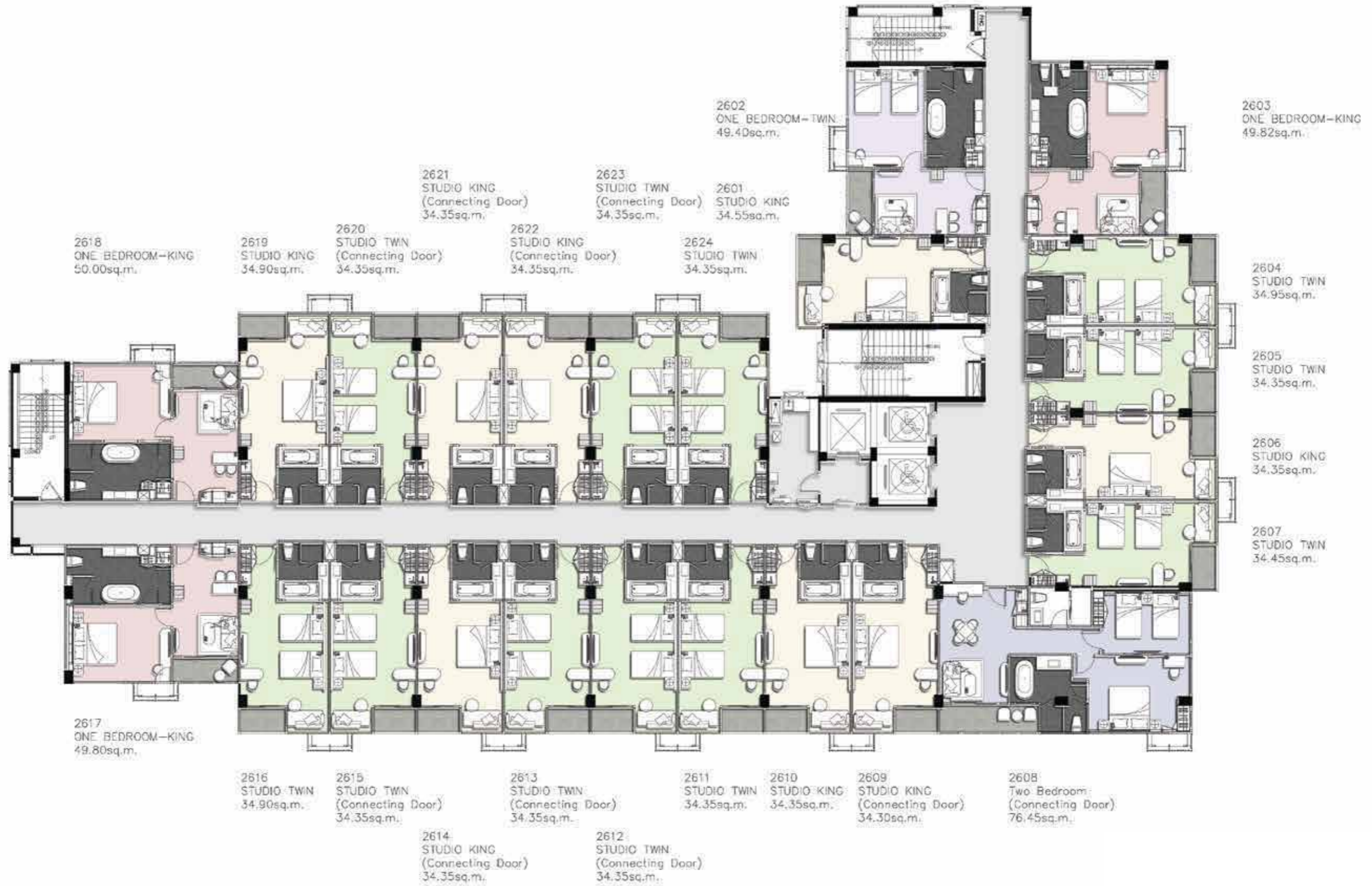
BUILDING 2

5th Floor



BUILDING 2

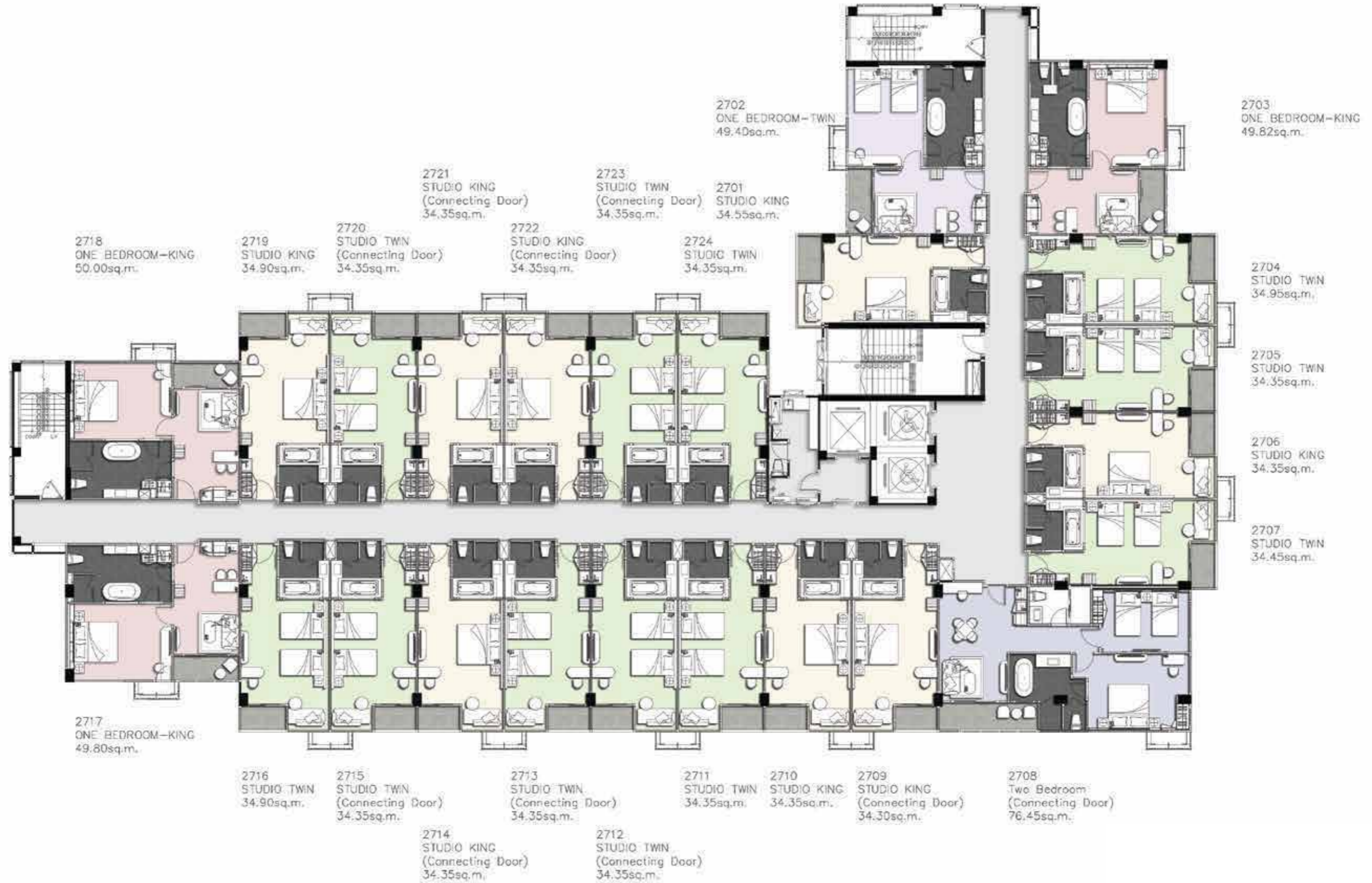
6th Floor





BUILDING 2

7th Floor



BUILDING 3

1st Floor





BUILDING 3

2nd Floor



BUILDING 3

3rd Floor





BUILDING 3

4th Floor



BUILDING 3

5th Floor





BUILDING 3

6th Floor



BUILDING 3

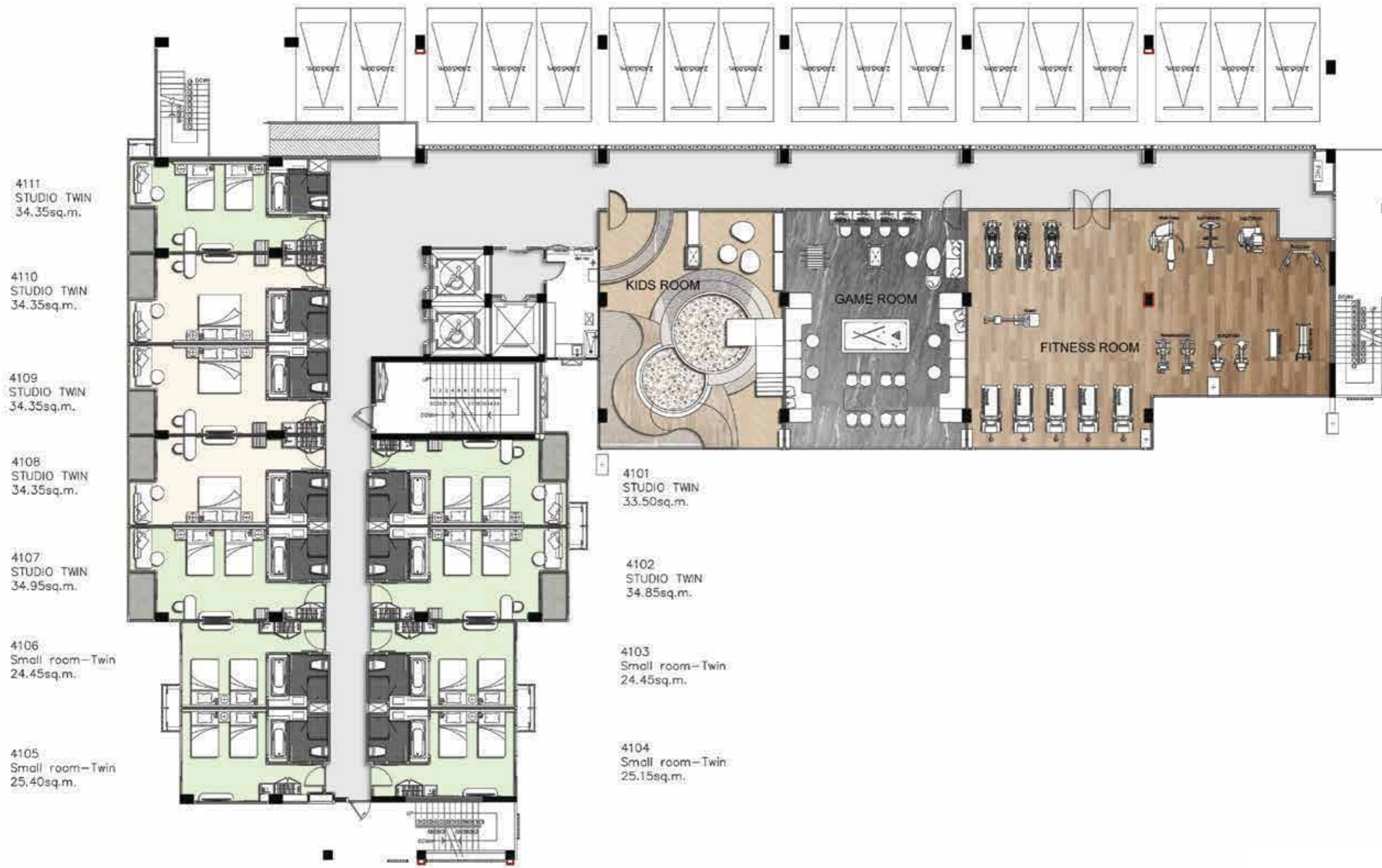
7th Floor





BUILDING 4

1st Floor



BUILDING 4

2nd Floor





BUILDING 4

3rd Floor



BUILDING 4

4th Floor





BUILDING 4

5th Floor



BUILDING 4

6th Floor





BUILDING 4

7th Floor



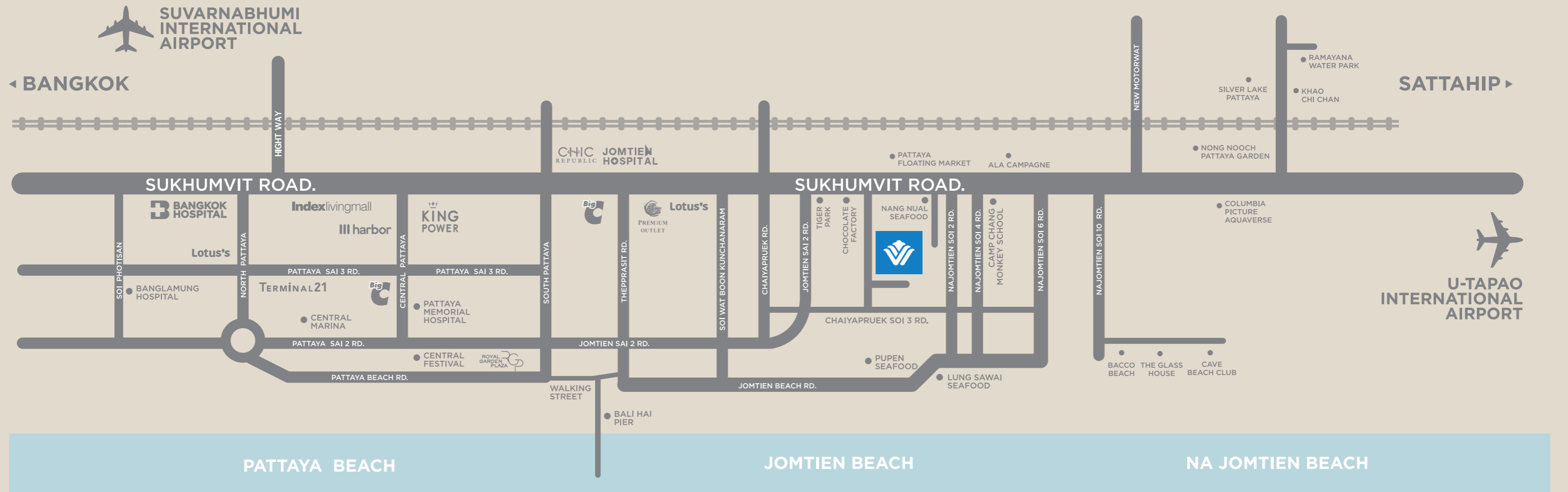


*Pictures shown are early architect renderings and are subject to change.



LOCATION

555-555/1 Moo.1, Na Jomtien,
Sattahip, Chon Buri 20250



PATTAYA CITY TOURIST ATTRACTION

- Pattaya Beach
- Jomtien Beach
- Royal Garden Plaza
- Avenue Shopping Mall
- Central Festival Pattaya Beach
- Terminal 21 Pattaya
- Big C South Pattaya
- Lotus's South Pattaya
- Outlet Mall Pattaya
- Central Marina Pattaya
- Columbia Picture Aquaverse
- Nong Nooch Pattaya Garden
- Rayamana Water Park
- Pattaya Inter Hospital
- Bangkok Pattaya Hospital
- Jomtien Hospital

WYNDHAM

HOTELS & RESORTS

Wyndham Hotel Group is one of the three principal divisions of Wyndham Worldwide Corporation. Wyndham Worldwide is listed on the New York Stock Exchange (NYSE: WYN).

Wyndham Hotel Group is the world's largest and most diverse hotel company, encompassing approximately 7,540 hotels and over 650,200 rooms in 71 countries around the globe.

From the award winning upscale offerings of its namesake Wyndham Hotels and Resort:@ brand, to the distinctly comfortable and familiar properties of its iconic Days Inne, Ramada@ brands, the company prides itself on providing guests and franchisees with exceptional customer service, great value and the most lodging choices around the world.

The company's loyalty program, Wyndham Rewardse, is the largest in the lodging industry, based on number of participating hotels, with approximately seven million active members.





Siam Inter World Asset Co., Ltd. is the biggest leader tourist operator company in Thailand with more than 20 years experience in hotel - real estate management and development.

Therefore, to support the growing tourism business, **Siam Inter World Asset Co., Ltd.** has initiated the largest real estate project "**Wyndham Jomtien Pattaya**". Operated and managed by the **Wyndham Group**.

Discover Happiness "The best of Aesthetics"

Siam Inter World Asset Co., Ltd. เป็นผู้ดำเนินธุรกิจอุตสาหกรรมการท่องเที่ยวชั้นนำระดับโลกในประเทศไทย ที่มีประสบการณ์มายาวนานในการพัฒนาธุรกิจท่องเที่ยวและการบริหารจัดการโรงแรม รีสอร์ท อสังหาริมทรัพย์ต่างๆมากมายทั้งในไทยและต่างประเทศ เพื่อรองรับอุตสาหกรรมการท่องเที่ยวและส่งเสริมการท่องเที่ยวมายาวนานกว่า 20 ปี

ดังนั้นเพื่อรองรับการเติบโตของธุรกิจท่องเที่ยว **Siam Inter World Asset Co., Ltd.** จึงได้ริเริ่มโครงการอสังหาริมทรัพย์ที่ใหญ่ที่สุด "**Wyndham Jomtien Pattaya**" ดำเนินการและบริหารงานโดย **Wyndham Group**

Developed by



SIAM
INTER WORLD ASSET